

**Sundeeep Teki**



**UCL**

# **Neural analysis of real-world sounds**

**Auditory Cognition Group**

**Wellcome Trust Centre for Neuroimaging**

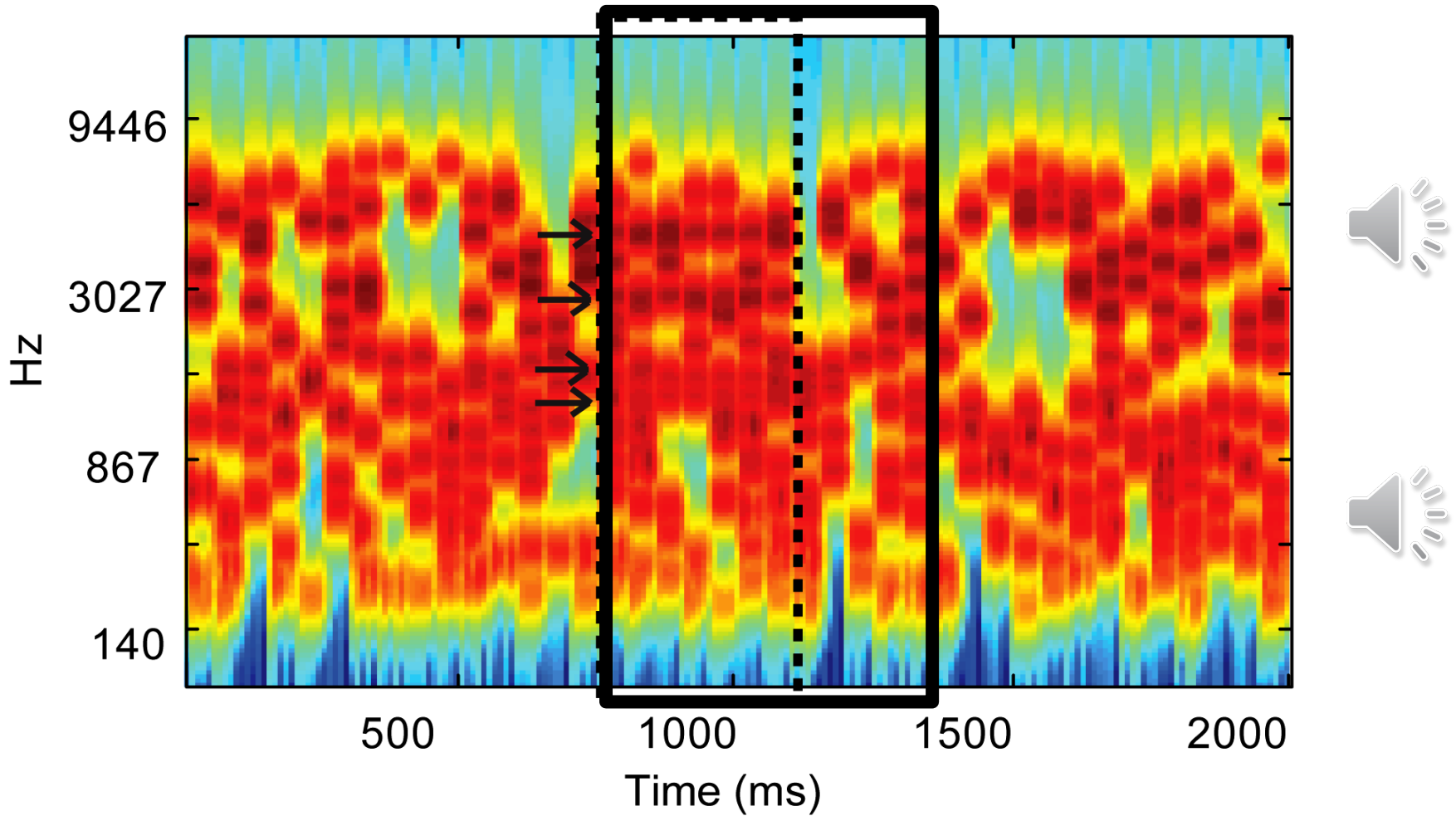
# Cocktail party problem



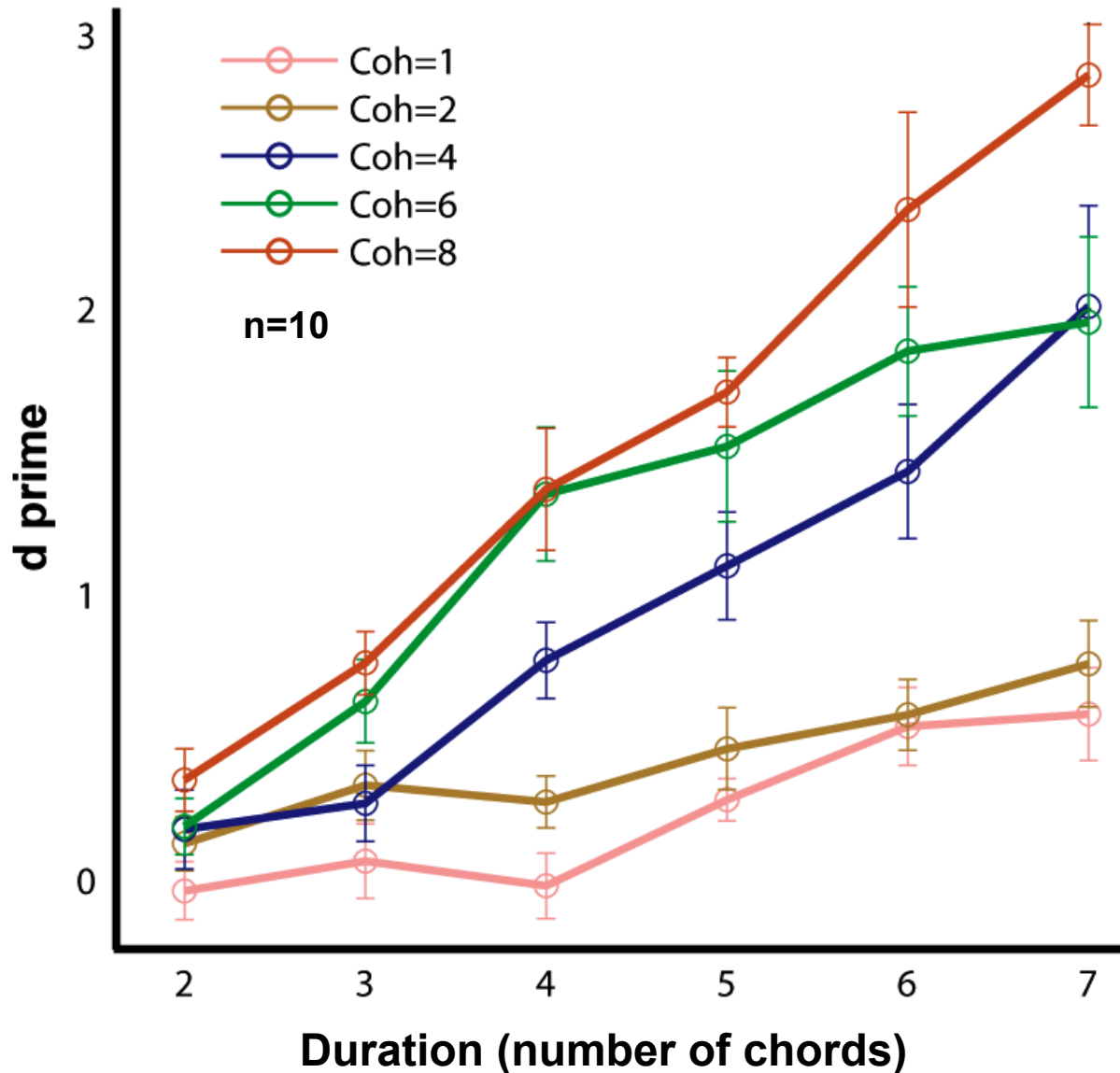
*Image from 'Breakfast at Tiffany's'*

# Stimulus

Figure with 'coherence' = 4 and 'duration' = 7

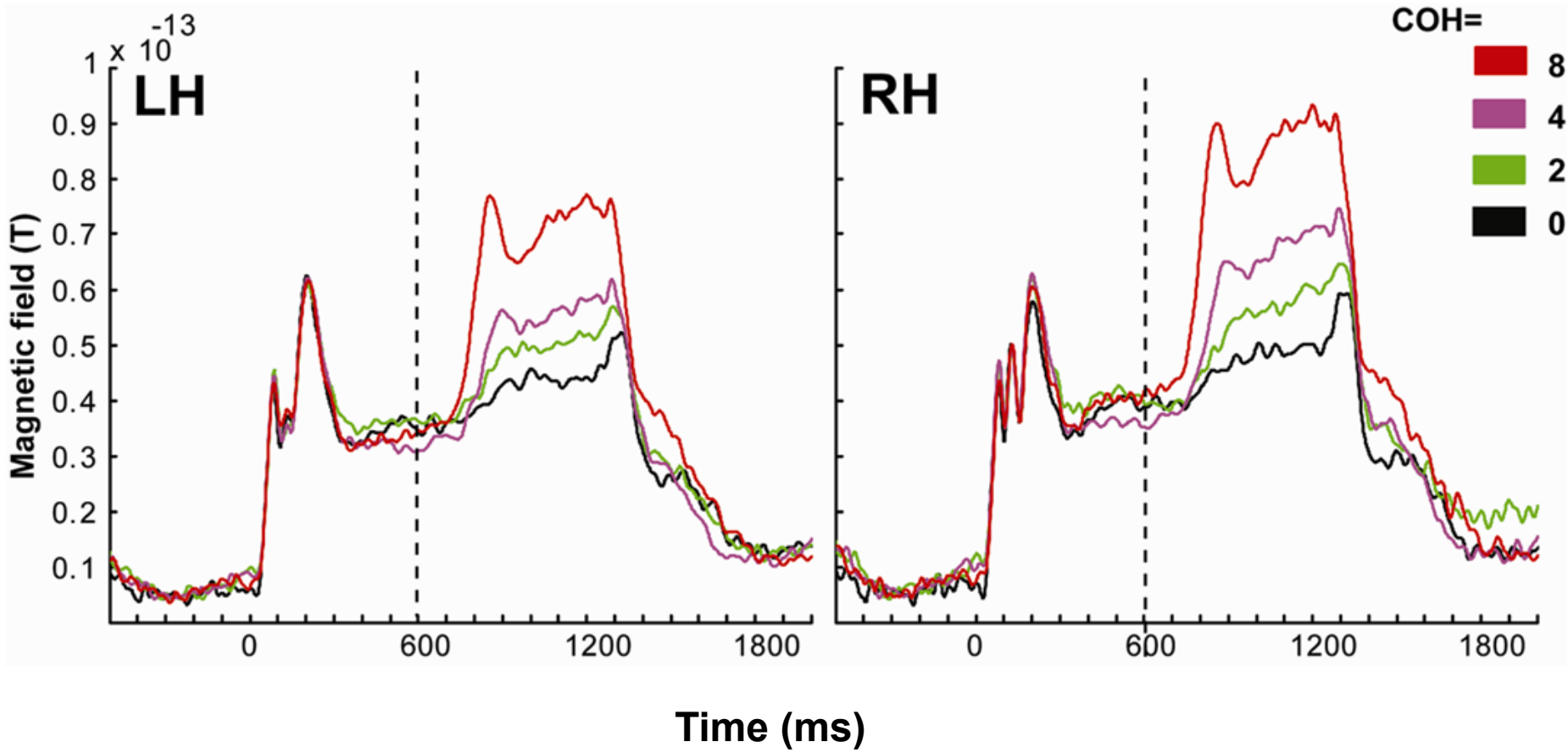


# Figure-detection performance



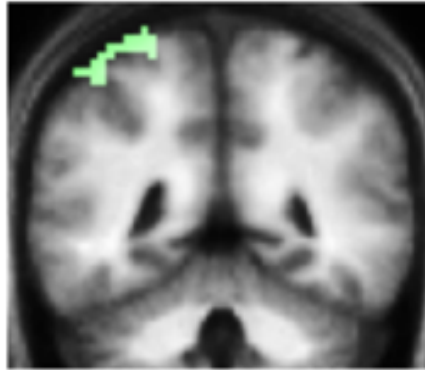
# Magnetic brain activity using MEG

n=20

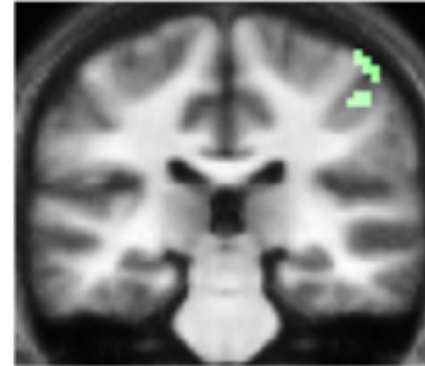


# Functional brain activity using MRI

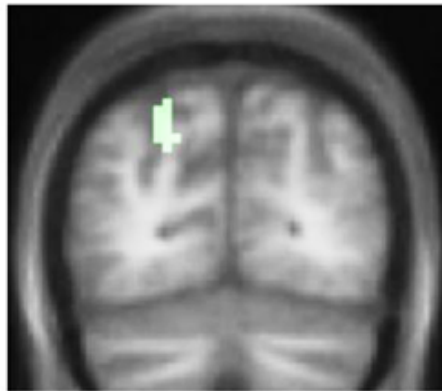
Left IPS



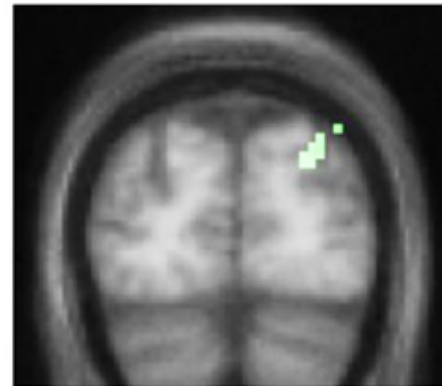
Right IPS



Left IPS



Right IPS



IPS: Intraparietal Sulcus

Teki et al., 2011  
*Journal of Neuroscience*

# Applications

## Clinical

- Auditory Processing Disorder (NHNN, UK)
- Military blast victims (NIH, USA)
- Dementia
- Hearing impaired and aging population

## Crowdsourcing

- Task being developed for The Great Brain Experiment app for Apple and Android phones:  
<http://www.thegreatbrainexperiment.com/>

# Acknowledgments



**Tim Griffiths**



**Maria Chait**



**Sukhbinder Kumar**



**Shihab Shamma**